

New with Comacchio

Comacchio is known worldwide for its MC line of tieback/micropile rigs, geothermal rigs, soil investigation, and exploration rigs. A new factory has been set up for Kelly rigs with the smallest rig weighing just 16 tons (CH 150) and the largest the CH 850 designed for those larger hole diameters with 265,000 foot-pounds. In between that is a CH 320, CH 450, and CH 650 (approximate metric tons working weight – 15, 32, 45, 65 & 85) to offer a wide range of Kelly drilling rigs. In addition, the rigs can add Kelly extensions to drill up to 100 feet in one pass with the largest models.

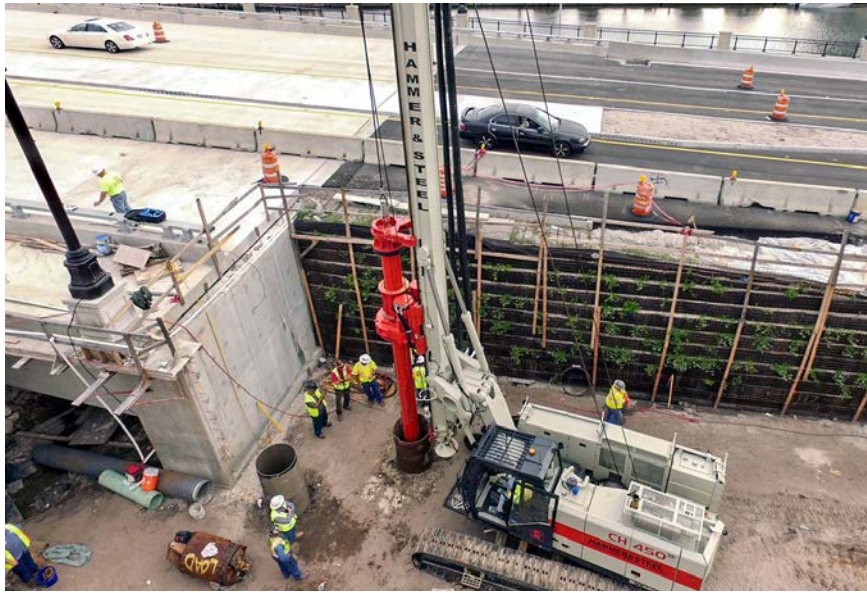
All these rigs are designed for easy transport given their capabilities with the CH 150, 320, 450, and 650 transported with the drill head and Kelly bar attached for quick start-up once on the job site. Many of the models have a very low torque to weight ratio, which results in lower mob costs and higher performance. This is partially achieved by lengthening the track frames and adding weight to the tracks below the center of gravity, where it has its best effects on stability.

These rigs are designed for quiet, efficient drilling and can adapt to the diverse conditions encountered

on today's job sites. These include low headroom options, drilling with double wall casing, oscillators, long Kelly bars for deeper holes (up to 200 feet), different length Kelly bar options, and drilling without Kelly bars for other applications. Large flat

screens provide the operator with a wealth of useful information to assist in drilling the hole. Depth, torque RPM, and pull/push forces are standard, it also shows the weight of the tool, mast alignment, operation manuals and parts, fault finding, and





▲ CH 450 drilling 36-inch by 80-foot cased holes in Florida



▼ CH 850 drilling rock sockets

simulation of functions to determine faults and help customers get up and run quickly when encountering a problem. To reduce wire rope wear and accidental damage to ropes features such as wide drums that only have one layer are supplied, together with automated wire spooling for standing up and laying down the mast.

The rigs also come with the latest electronic aids for drillers, such as auto gear changes to optimize torque versus RPM, auto spotting over the hole, auto alignment, changing power between the winch and drill head as needed, and sensors for monitoring pressures and temperatures to prevent breakdowns and assist in fault finding.

They also have new technology incorporated in hydraulics and cooling, with no pilot pressure hydraulics (saves energy and hoses), improved hydraulic cooling systems, noise reduction, and custom-built frames using lighter, stronger steel.

The result is a modern design, with lots of power and efficiency, lightweight but strong, fast set up, flexible to drill other applications and adapt to special drilling conditions, while still being a competitive investment, just like their famous MC micropile & anchor line. How very Comacchio!

With this package comes Comacchio's reputation for providing parts and service, backed by Hammer & Steel's five locations to service the CH line. ▲