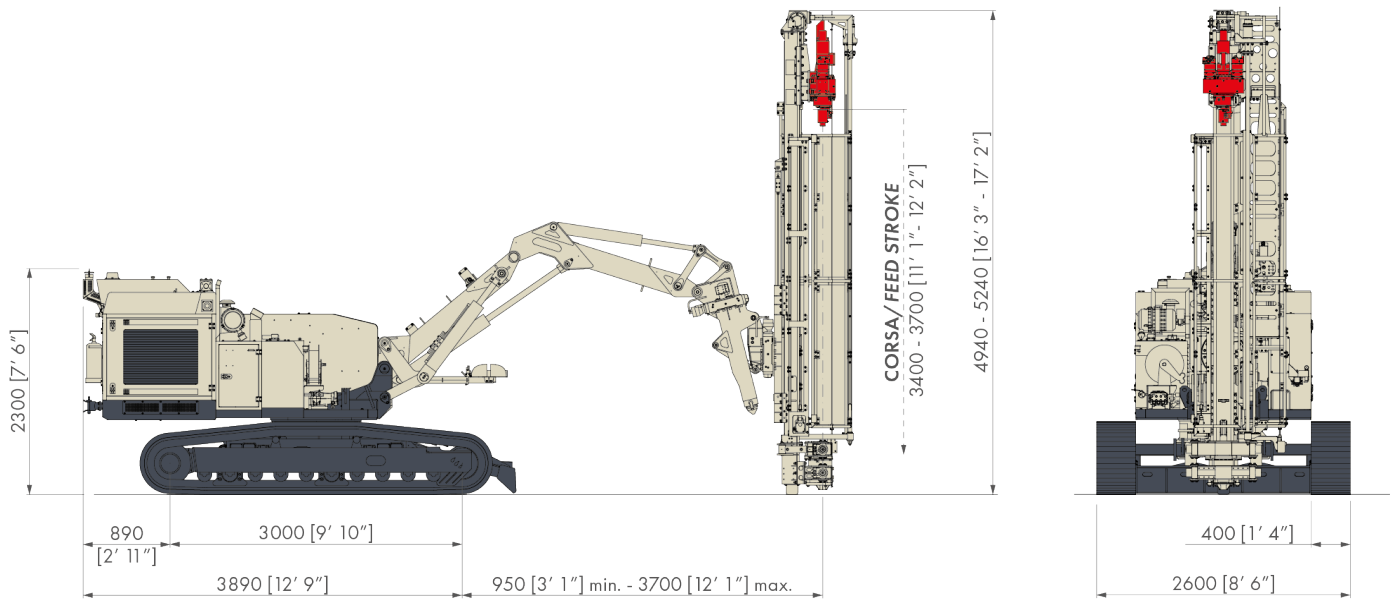


MC 9 LR

PERFORATRICE IDRAULICA CINGOLATA
HYDRAULIC CRAWLER DRILL



ALLESTIMENTO STANDARD STANDARD SET-UP



TESTA SINGOLA - SINGLE HEAD




Rotazione
Rotary Drilling

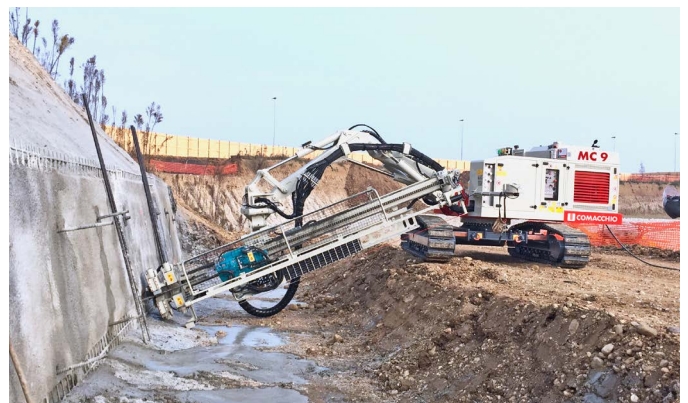


Rotopercussione
Rotary-Percussive

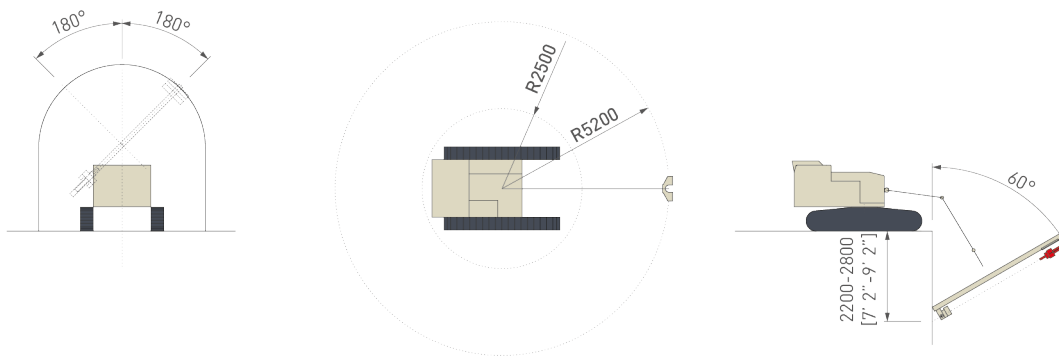
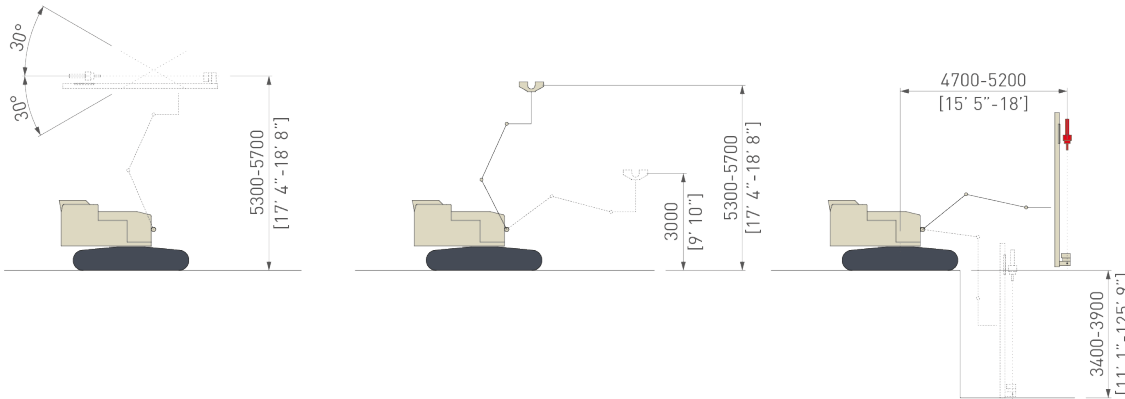
	m.s.	i.s.		
Potenza Motore <i>Engine Power</i>	kW	HP	97 - 100	130 - 134
Livello Emissioni <i>Emission Level</i>	-	-	Stage 4 / Tier 4 final - Stage 5 / Tier 4 final	
Corsa Mast <i>Mast Feed Stroke</i>	mm	ft-in	3.400 - 3.700	11' 2" - 12' 2"
Forza di Spinta <i>Feed Force</i>	daN	lbs	2.500	5,620
Forza di Tiro <i>Retract Force</i>	daN	lbs	2.500	5,620
Coppia Rotary/Martello <i>Rotary/Drifter Torque Range</i>	daNm	lb * ft	165 - 1.160	1,217 - 8,556
Giri Rotary/Martello <i>Rotary/Drifter Speed Range</i>	rpm		43 - 236	
Serraggio Morse <i>Clamp Range</i>	mm	in	32 - 170	1" 1/4 - 6" 1/16
Peso <i>Weight</i>	ton		9-10	

OPZIONI E ACCESSORI OPTIONS AND ACCESSORIES

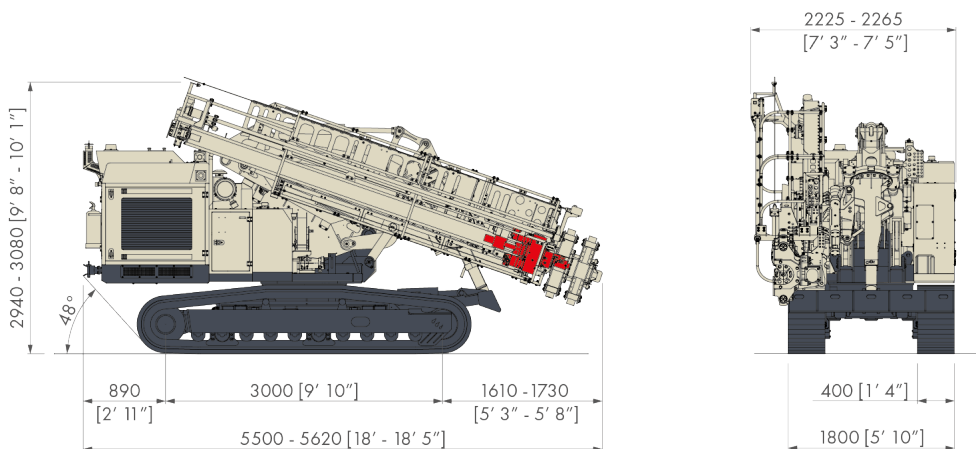
Gruppo morsa svitatore <i>Clamps with casing extractor</i>	Lubrificatore di linea <i>D.T.H. lubricator</i>
Sovrapattini in gomma per cingoli <i>Rubber shoes for steel tracks</i>	Pompa schiumogeno <i>Foam pump</i>
Kit pompa carico gasolio <i>Fuel filling pump kit</i>	Fari di lavoro <i>Work lights</i>
Saracinesca aria-elettro-idraulica <i>Electro-hydraulic air gate valve</i>	Kit CE <i>CE Marking kit</i>
Martello idraulico <i>Hydraulic drifter</i>	Kit lavaggio <i>Washing kit</i>
Centratore guida aste <i>Rod guiding device</i>	
Caricatore 3/5/6 aste <i>3/5/6 rods carousel</i>	



MOVIMENTAZIONE MAST MAST MOVEMENTS



DIMENSIONI DI TRASPORTO TRANSPORT DIMENSIONS



Comacchio S.p.A.
Via Callalta, 24/B
31039 Riese Pio X (TV) Italy

T +39 0423 7585
F +39 0423 755592
sales@comacchio.com

comacchio.com

