







CHF 90

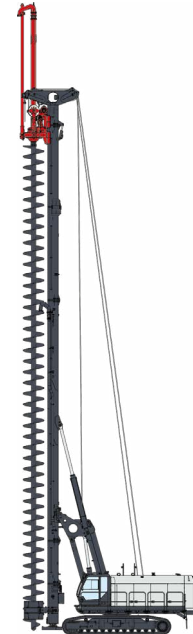
SELF-ERECTING
HYDRAULIC PILING RIG FOR CFA



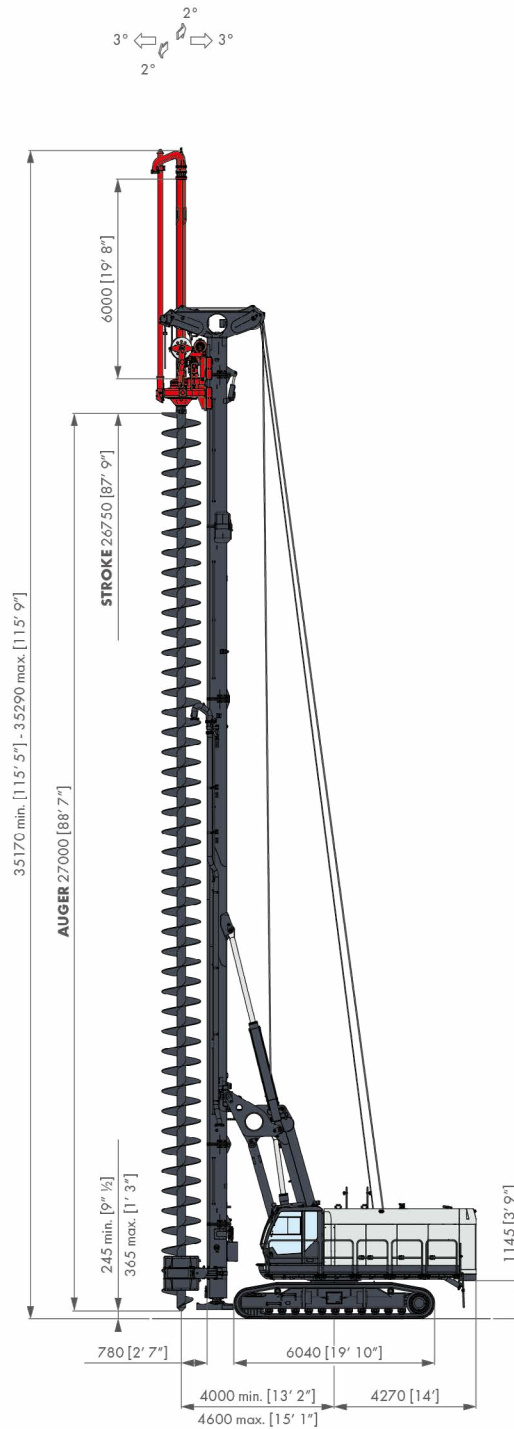
DEDICATED RIG FOR CFA DRILLING

CH

CH RANGE/TECHNOLOGIES		CHF 90
	BP (Bored Piles)	-
	CFA (Continuous Flight Auger)	T4 •
	Quick Conversion	-
	DP (Displacement Piles)	•
	SM (Soil Mixing)	-
	LDTH (Large DTH)	-
	MP (Micropiles)	-
CLASS WEIGHT With kelly, rotary & w/o tool		90 TON



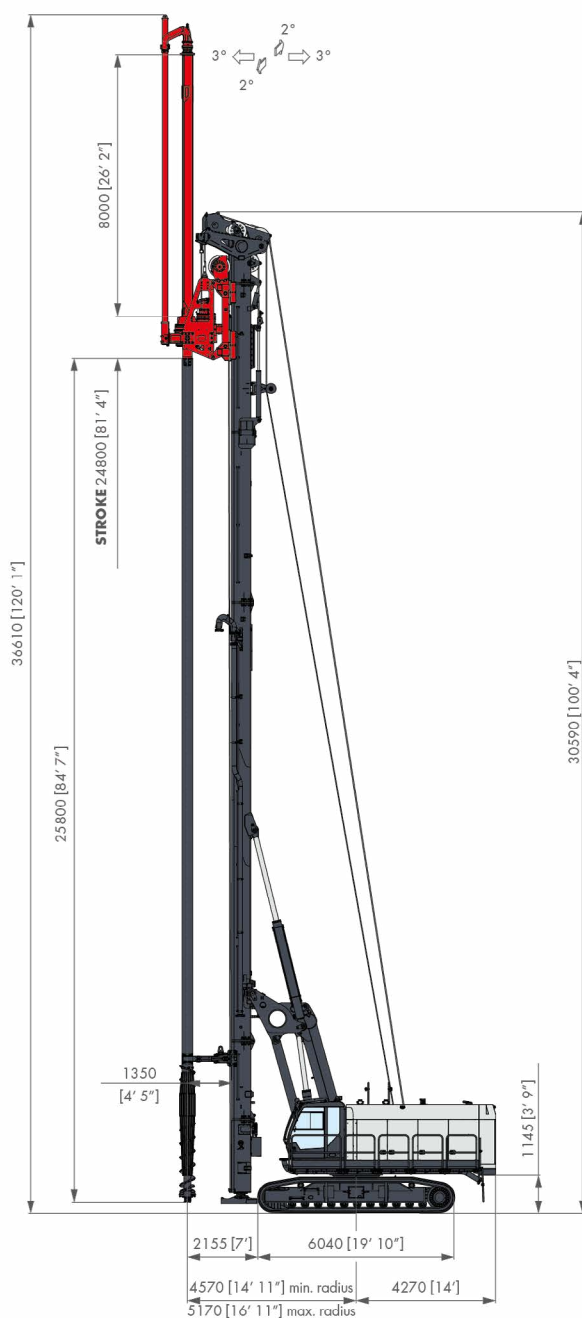
CFA



CFA (Continuous Flight Auger)	m.s.	i.s.	T4	
Nominal max. torque	kNm	lbf-ft	280 at 35 MPa	206,500 at 5,080 psi
Max. torque	kNm	lbf-ft	256 at 32 MPa	188,800 at 4,640 psi
Engine power rating	kW	hp	345 - 405 at 1.700 rpm	462 - 543 at 1.700 rpm
Max. pile diameter	mm	ft-in	1.200	3' 11"
Max. length of augers	mm	ft-in	27.000	88' 7"
Max. pile depth	mm	ft-in	26.500 + 6.000 = 32.500	87' + 19' 8" = 106' 82
Extraction force	kN	lbs	1.120	251,800
Crowd force on auger (optional)	kN	lbs	100	22,480
Operating weight w/o tool	ton		89,8 ¹	

NOTE | 1 - c/w auger extension, bottom opening gate and star type auger cleaner

DP/SM



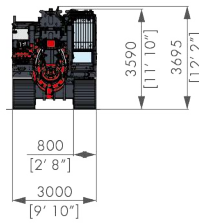
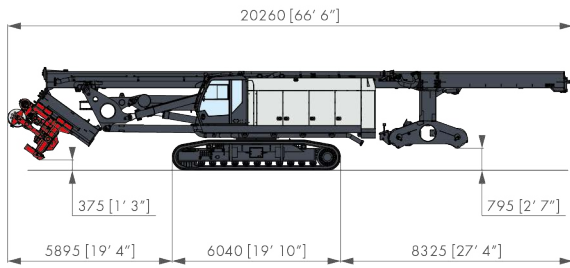
DP (Displacement Piles) SM (Soil Mixing)	m.s.	i.s.		
Nominal max. torque	kNm	lbf-ft	360 at 32 MPa	265,522 at 4,641 psi
Max. torque	kNm	lbf-ft	320 at 28,5 MPa	236,020 at 4,134 psi
Engine power rating	kW	hp	345 - 405 at 2000 rpm	436 - 543 at 2000 rpm
Max. drill string length	mm	ft-in	25.800	84' 7"
Max. length of drill string extension	mm	ft-in	8.000	26' 2"
Max. pile depth	mm	ft-in	24.500 + 8.000 = 32.500	80' 5" + 26' 2" = 106' 7"
Extraction force	kN	lbs	442	99,365
Max. pull down force	kN	lbs	210	47,210
Operating weight w/o tool	ton		95¹	

NOTE | 1 - c/w 8.000 mm (26' 3") drill string extension

TRANSPORT DIMENSIONS



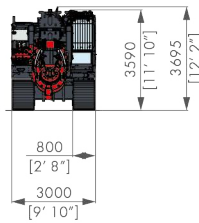
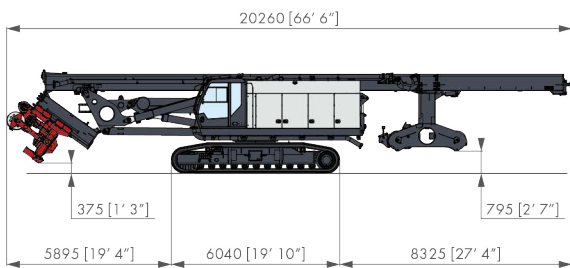
VERSION 1



	m.s.	
Transport weight	ton	84,5 ¹

NOTES 1	c/w Rotary head c/w 800 mm (2' 7" 1/2) tracks c/w Counterweight w/o Mast food & Auger guide
----------------	--

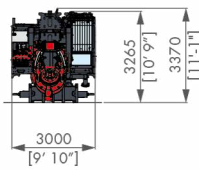
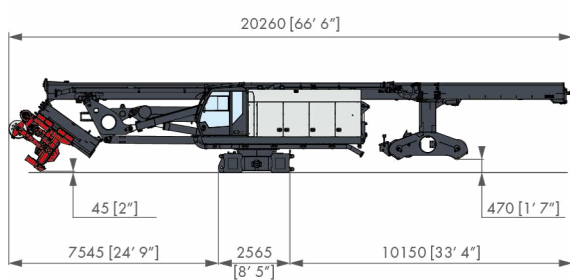
VERSION 2



	m.s.	
Transport weight	ton	70,5 ²

NOTES 2	c/w Rotary head c/w 800 mm (2' 7" 1/2) tracks w/o Counterweight w/o Mast food & Auger guide
----------------	--

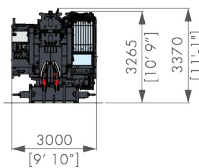
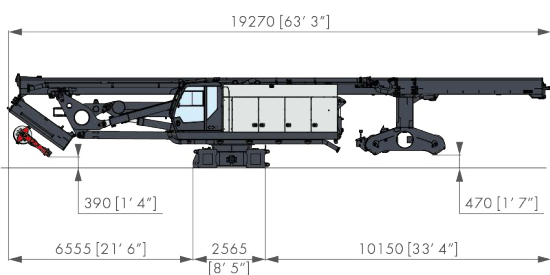
VERSION 3



	m.s.	
Transport weight	ton	50,5 ³

NOTES 3	c/w Rotary head w/o 800 mm (2' 7" 1/2) tracks w/o Counterweight w/o Mast food & Auger guide
----------------	--

VERSION 4



	m.s.	
Transport weight	ton	46,2 ⁴

NOTES 4	w/o Rotary head w/o 800 mm (2' 7" 1/2) tracks w/o Counterweight w/o Mast food & Auger guide
----------------	--



DEDICATED RIG FOR CFA DRILLING



Comacchio S.p.A.
Via Callalta, 24/B
31039 Riese Pio X (TV) Italy
T +39 0423 7585
F +39 0423 755592
sales@comacchio.com

comacchio.com



UNI EN ISO 9001:2015 / ISO 14001:2015